



# BRIGADE®

## GRANULAR INSECTICIDE



### Product description

2g/kg Bifenthrin - Group 3A Insecticide

Brigade® Granular Insecticide is a tan, ready to use sand based granule specifically designed for the professional pest management industry. The unique formulation technology of Brigade® Granular Insecticide gives each granule perfect flowability making applications more accurate and easier to apply. Brigade® Granular Insecticide is unscheduled, odourless, non-staining and non-sensitizing, providing a cost effective solution to pest management. The unique rounded sand grains used in Brigade® ensures the product has superior "Roll" and will not bridge or stick together allowing even distribution.



### Where to use

Registered for the control of a wide range of household and lawn insect pests including a variety of ant species, ticks and fleas, this product is ideal for use in public and private buildings and lawns. Being non-scheduled it can be used in schools and government sites where other insecticied product are restrictetd. It is ideal for treating pests that harbour between cracks and crevices such as between pavers and structural cracks. The sand ganules are poured or brushed into these cracks where they roll into the treatment zone effectively killing the problem pests and leaving residual protection with little or no site disruption. Brigade® Granular Insecticide can also be used when extended rain periods limit the use of liquid sprays or in areas where spraying liquid insecticides is not practical or possible. Brigade® Granular Insecticied is also suitable for use on lawn pests such as ants, lawn grubs and beetles.

### Features

- Unique Easy to Spread sand formulation
- Superior "Roll" to flow into cracks and crevices
- Ready to use
- Suits most broadcast machinery
- Minimal site disruption required.
- Non-scheduled
- Odour free, non staining, not phytotoxic
- Broad spectrum
- Fast knockdown and long residual
- Ideal for applying in wet weather
- Cost effective and convenient to use

### How to apply

- Small areas - shaker packs
- Medium areas- hand held granule spreader
- Large Areas- Machine mounted granule Spreaders

Areas should be irrigated with at least 4mm of water immediately after application



**FMC** For all your pest solutions



## Application rates

Situations	Pest	Rate kg/ha	Rate kg/100m <sup>2</sup>
External surrounds of buildings and structures	Black Ants, Coastal Brown Ants, Funnel Ants, Meat Ants, Sugar Ants, Stinging Ants	60 - 220	0.6 - 2.2
	Fleas (Adults & Larvae) ( <i>Ctenocephalides spp.</i> )	110 - 220	1.1 - 2.2
	Ticks ( <i>Ixodes spp.</i> )	110 - 220	1.1 - 2.2
Turf (For example: lawns, commercial turf farms, parks, recreational areas, golf courses, bowling greens, sports fields)	Lawn Armyworm ( <i>Spodoptera maurita</i> ) Sod Webworm ( <i>Herpetogramma licarsialis</i> )	60	0.6
	Argentine stem weevil adults ( <i>Listronotus bonariensis</i> )	60 - 120	0.6 - 1.2
	African black beetle ( <i>Heteronychus arator</i> )	120 - 180	1.2 - 1.8
	Billbug adults ( <i>Spenophorus brunnipenis</i> )	60 - 120	0.6 - 1.2
	Black Ants, Coastal Brown Ants, Funnel Ants, Meat Ants, Sugar Ants, Stinging Ants	60 - 220	0.6 - 2.2

This table is to be used as a guide only. Always refer to the registered label before using this product

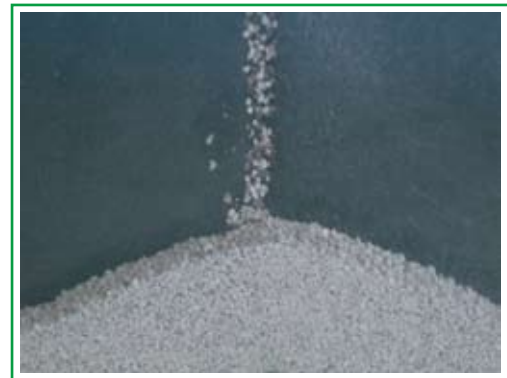


## Superior dispersion qualities

Superior “rollability” of the unique rounded granules in Brigade® Granular Insecticide ensures the product flows to the full extremities of the cracks and crevices to give the most effective control possible.



Brigade® Granules showing superior flow and reach of the granules with no bridging in the crevice passage



Inferior insecticide granules showing bridging across crevice and reduced flow

**DO NOT** apply Brigade® Granular Insecticide within 2 metres of a fishpond or water containing fish or aquatic species.

FMC and Brigade® are registered trademarks of FMC Corporation Philadelphia